

Luminous pigmentless blue color

--- Graphical arts, Bitumen-based drawing



REFERENCE

Luminous blue [D01976]

KEYWORDS

FINE ARTS / CREATIVE LEISURE
ACTIVITY / MINERAL / DRAWING /
LUMINESCENCE



APPLICATIONS

- Fine arts
- Decoration



END USERS

- Beginner or advanced artists

Technology readiness level

--- TRL 7



INTELLECTUAL PROPERTY

Patent pending FR 1851727



RESEARCH TEAM

Institut Lumière Matière (ILM)
UCBL, CNRS / Université de Lyon

CONTACT US

Laetitia ROUX
+33(0)4 26 23 56 65
Laetitia.roux[@]pulsalys.fr

DESCRIPTION

The fruitful collaboration between an artist and a researcher in physical chemistry began during the Spring school OKHRA-CNRS. It gave birth to a new composition for bitumen based drawing. Using carefully selected white chalk, this new mixture enables to obtain a particularly bright color : the "luminous blue". The luminescence appears after respecting a particular *modus operandi* for the application and drying of the layers spread on the paper. Numerous paintings were realized by the artist with this patented mixture :

<https://www.anne-goyer.com/bitumendrawings>

COMPETITIVE ADVANTAGES

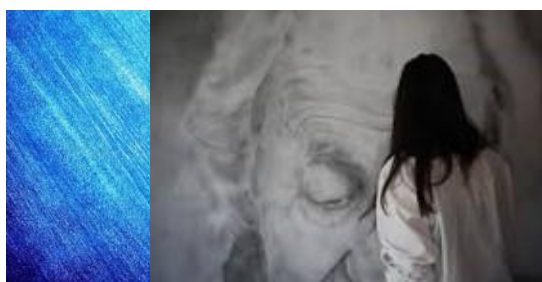
- Natural luminescence
- Pigmentless color
- Durability and stability over the long term

DEVELOPMENT STATUS

- Luminescence characteristics qualified by spectroscopy : reproducible effect
- Results published in ARSAG journal [Support/Tracé](#) (february 2018).
- Other colors "of the sky" could be obtained (orange, red...) by adjusting the chalk.

PARTNERSHIP

Pulsalys is looking for industrial partners interested in co-developing and / or marketing this painting kit.



OUR OPPORTUNITIES

<https://www.pulsalys.fr/our-projects/>

PULSALYS SATT LYON ST ETIENNE:
47 bd du 11 novembre 1918 - CS 90170
69625 Villeurbanne Cedex
FRANCE



PULSALYS
SATT LYON ST ETIENNE